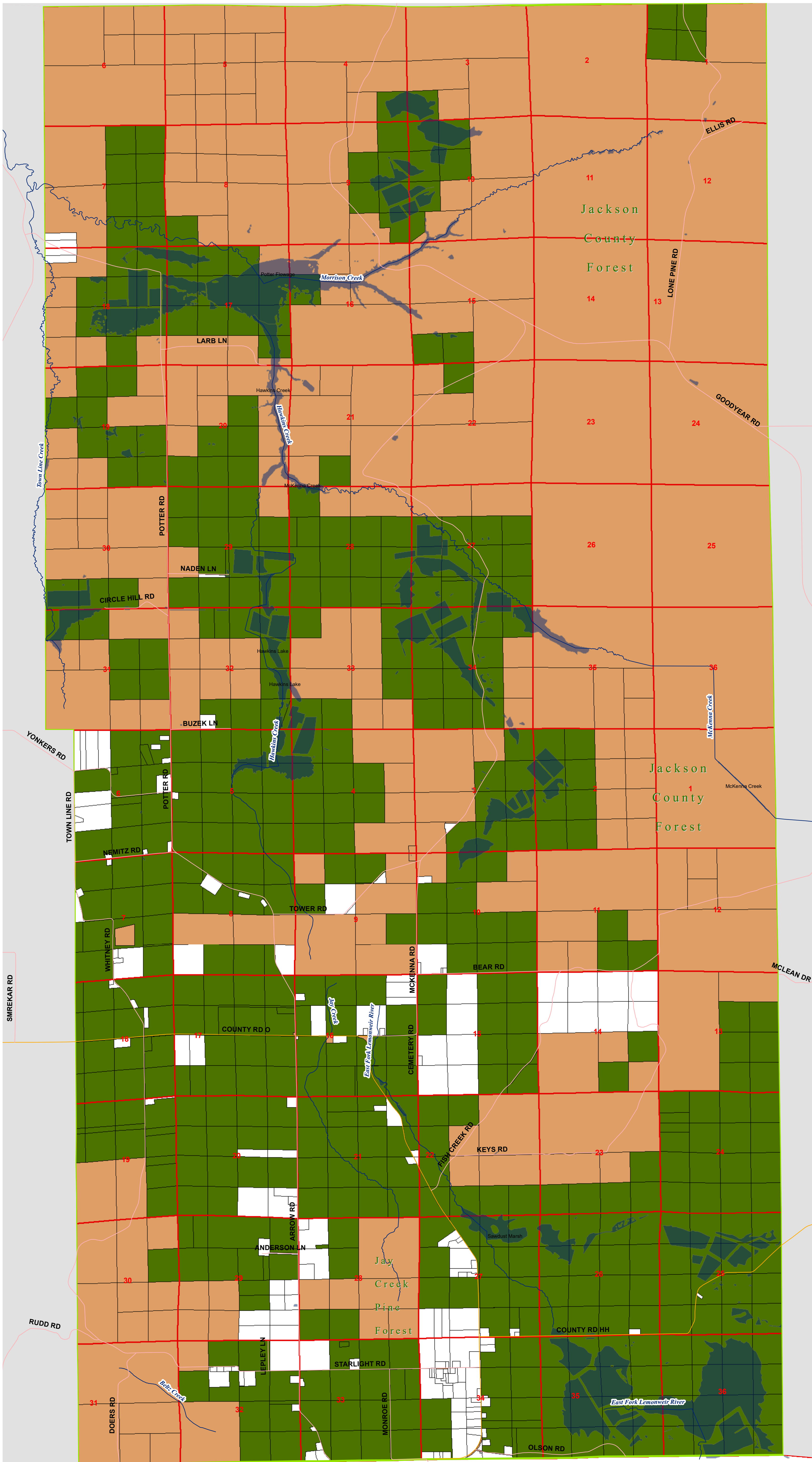


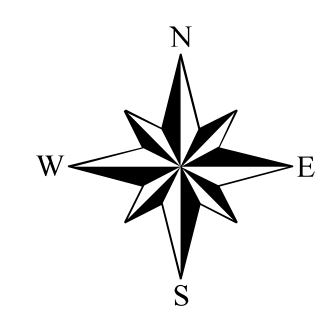
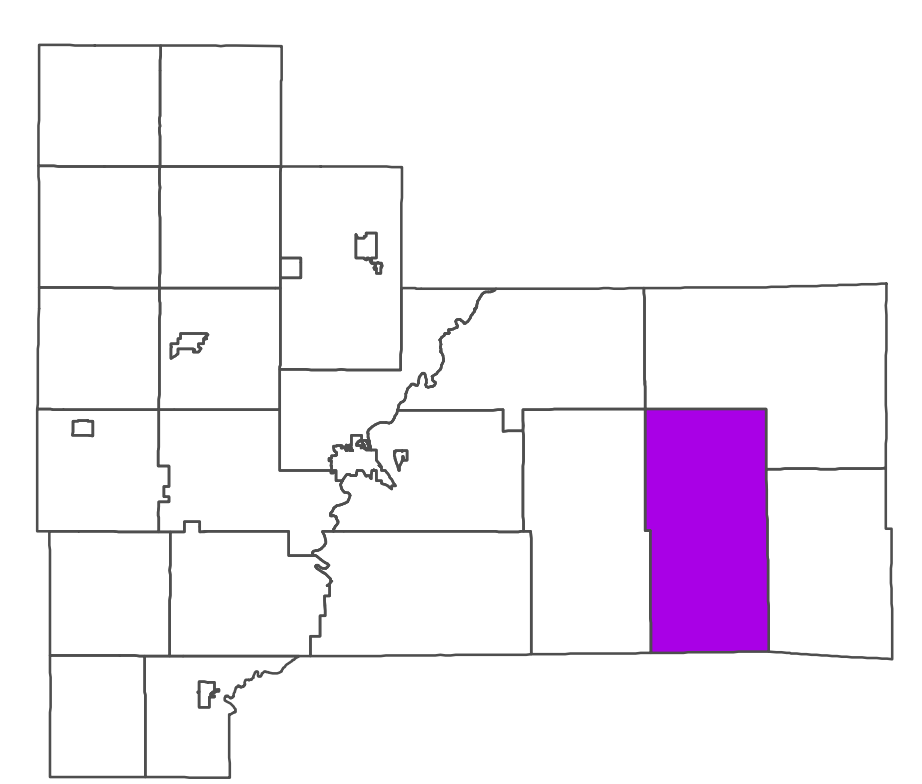
**Farmland Preservation Plan Map
for
Jackson County, Town of Knapp**

**TOWN of KNAPP
T.20N.-R.1W
T.21N.-R.1W.**



Legend

- PLSS Sections**
- PLSS Sections
- Roads**
- County Road
- Town Road
- Hydrology**
- Named Streams and Rivers
- Open Water
- Farmland Preservation Plan Symbol**
- Farmland Preservation Area
- Ineligible Parcels
- Government Owned Parcels
- Municipality**
- TOWN OF KNAPP



Map prepared by Al Hoff under the direction of Jackson County Land Conservation Department Jackson County Planning and Zoning Department

September, 2016

Where inconsistencies exist between this map and the Future Land Use Map contained in the Jackson County Comprehensive Plan, this Farmland Preservation Map shall supersede.

Monroe County

