

Farmland Preservation Plan Map for Jackson County, Town of Garden Valley

**TOWN of GARDEN VALLEY
T.23N.-R.5W**

Legend

PLSS TOWNSHIPS

Town of Garden Valley (23N-5W)

PLSS Sections

PLSS Sections

Roads

State Hwy

Town Road

Hydrology

Named Streams and Rivers

Open Water

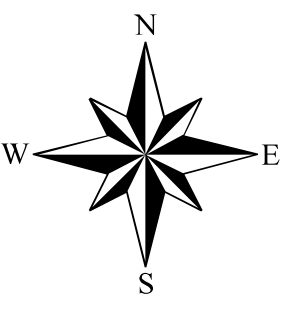
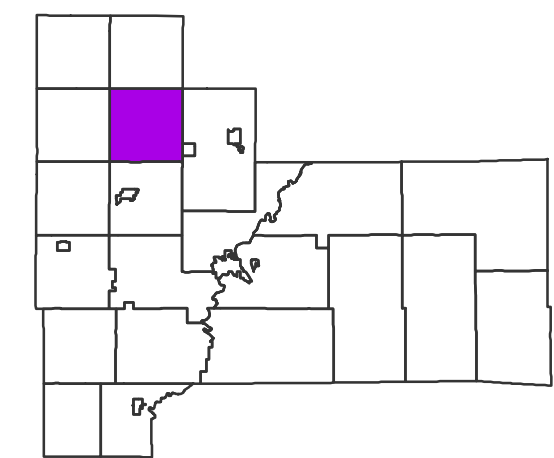
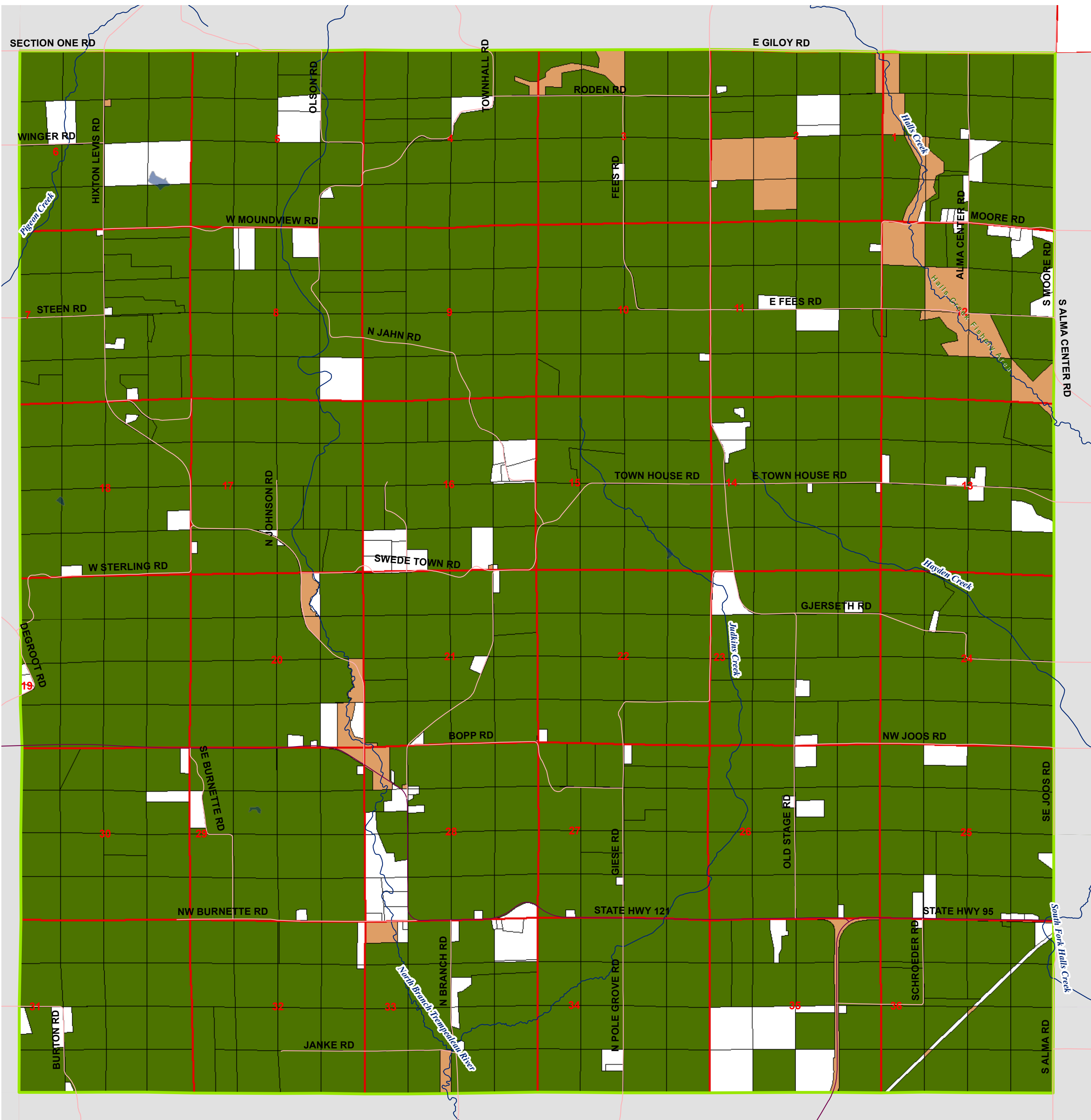
Farmland Preservation Plan Symbol

Farmland Preservation Area

Ineligible Parcels

Government Owned Parcels

Villages



Map prepared by Al Hoff under the direction of
Jackson County Land Conservation Department
Jackson County Planning and Zoning Department

September, 2016

Where inconsistencies exist between this map and the Future
Land Use Map contained in the Jackson County Comprehensive
Plan, this Farmland Preservation Map shall supersede.

