

Farmland Preservation Plan Map for Jackson County, Town of Cleveland

TOWN of CLEVELAND T.24N.-R.5W

Legend

PLSS TOWNSHIPS

 Town of Cleveland (24N-5W)

PLSS Sections

 PLSS Sections

Roads

 County Road

 Town Road

 US Hwy

Hydrology

 Named Streams and Rivers

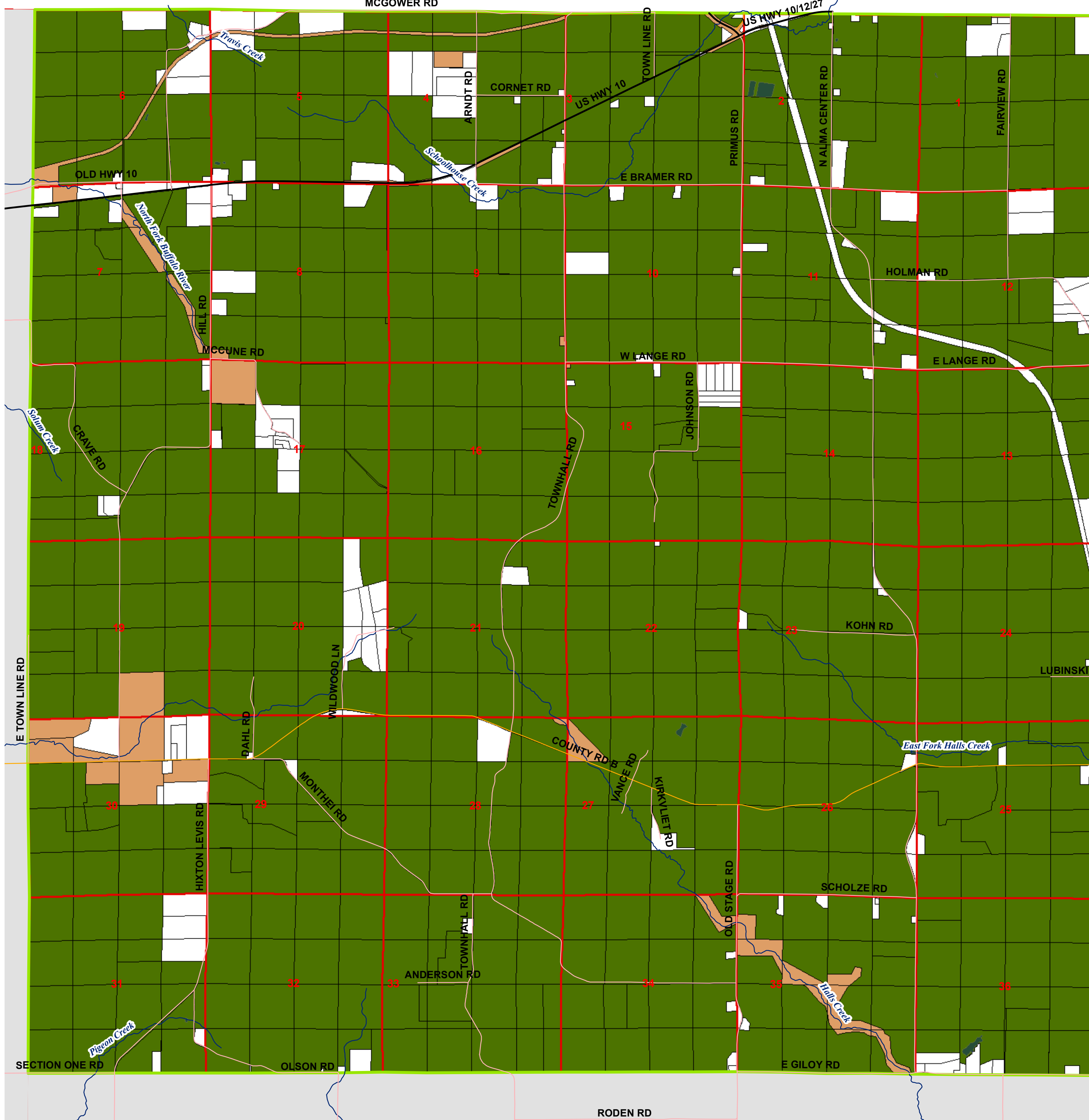
 Open Water

Farmland Preservation Plan Symbol

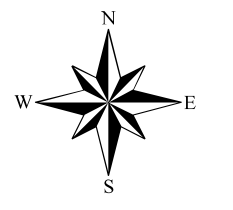
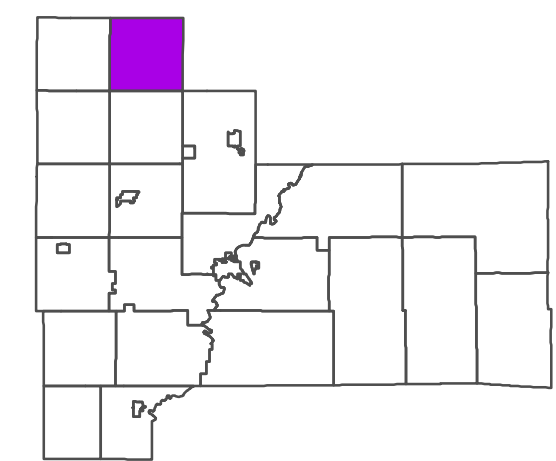
 Farmland Preservation Area

 Ineligible Parcels

 Government Owned Parcels



Clark County



Map prepared by Al Hoff under the direction of
Jackson County Land Conservation Department
Jackson County Planning and Zoning Department

September, 2016

Where inconsistencies exist between this map and the Future
Land Use Map contained in the Jackson County Comprehensive
Plan, this Farmland Preservation Map shall supersede.

