

# Farmland Preservation Plan Map for Jackson County, Town of City Point

**TOWN of CITY POINT**  
T.21N.-R.1E.  
T.22N-R.1E.  
T.22N-R1W.

### Legend

#### Roads

- County Road
- State Hwy
- Town Road
- WoodCo

#### Hydrology

- Named Streams and Rivers
- Open Water

#### PLSS Sections

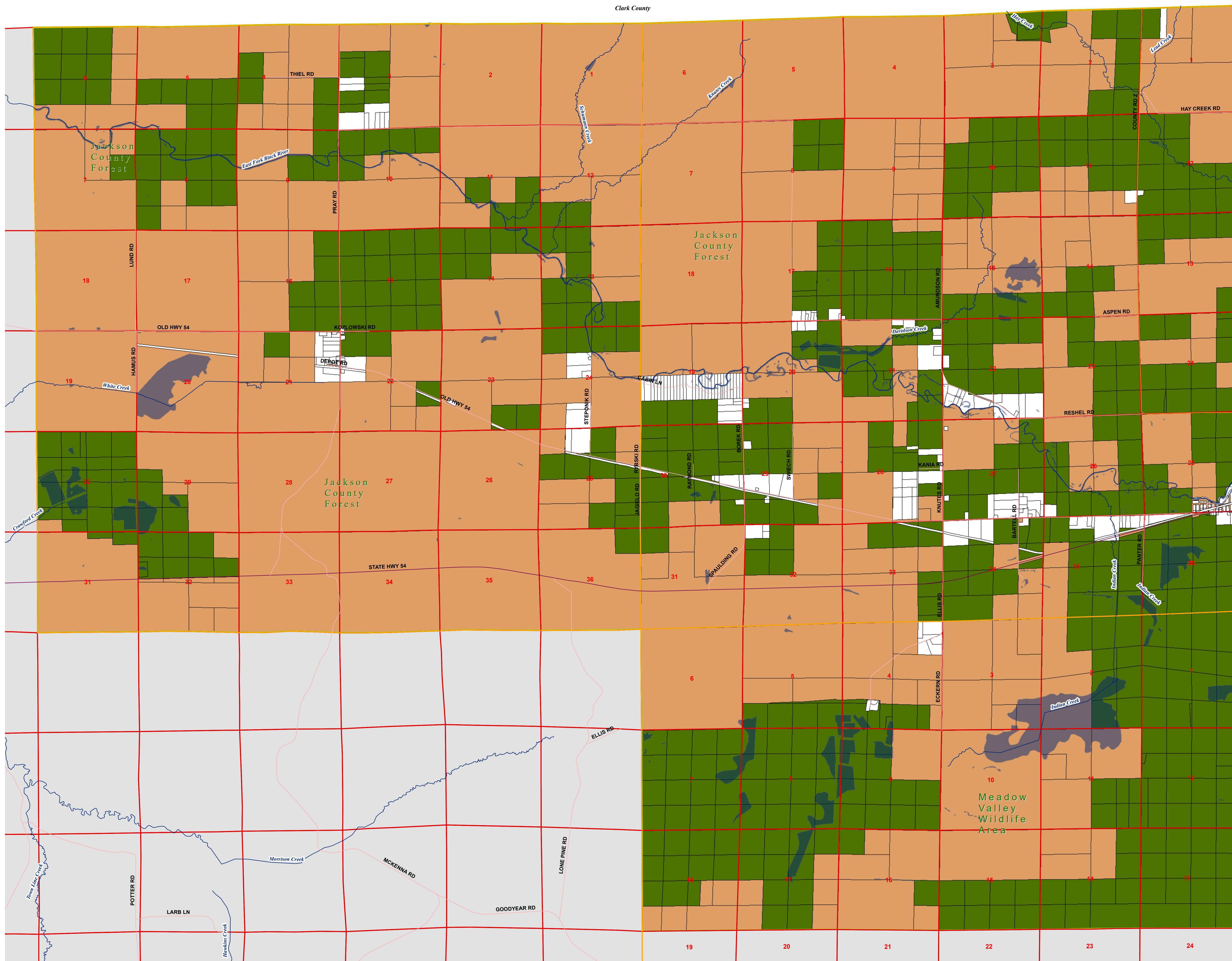
- PLSS Sections

#### Municipality

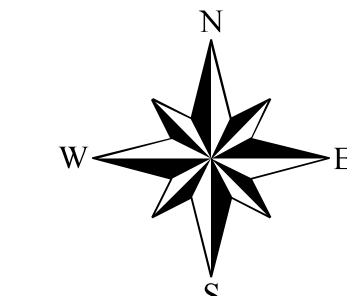
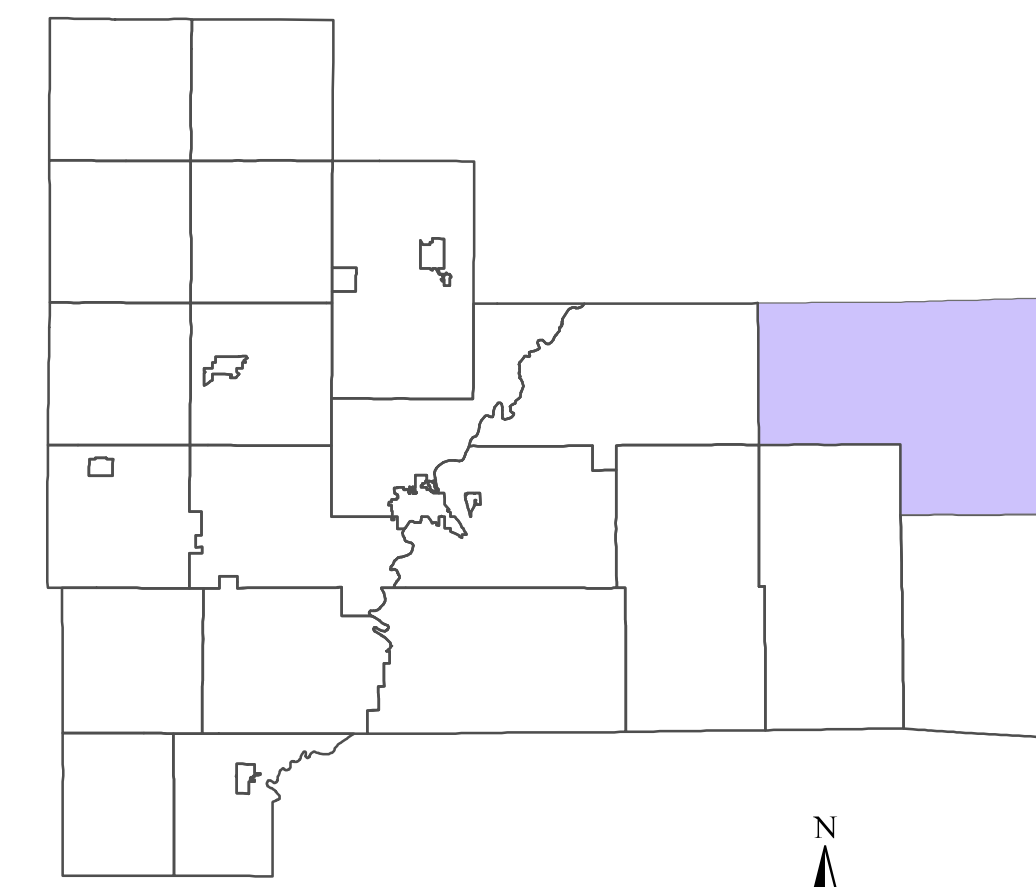
- TOWN OF CITY POINT

#### Farmland Preservation Plan Symbol

- Farmland Preservation Area
- Ineligible Parcels
- Government Owned Parcels



Wood County



Map prepared by Al Hoff under the direction of Jackson County Land Conservation Department  
Jackson County Planning and Zoning Department  
September, 2016

Where inconsistencies exist between this map and the Future Land Use Map contained in the Jackson County Comprehensive Plan, this Farmland Preservation Map shall supersede.

