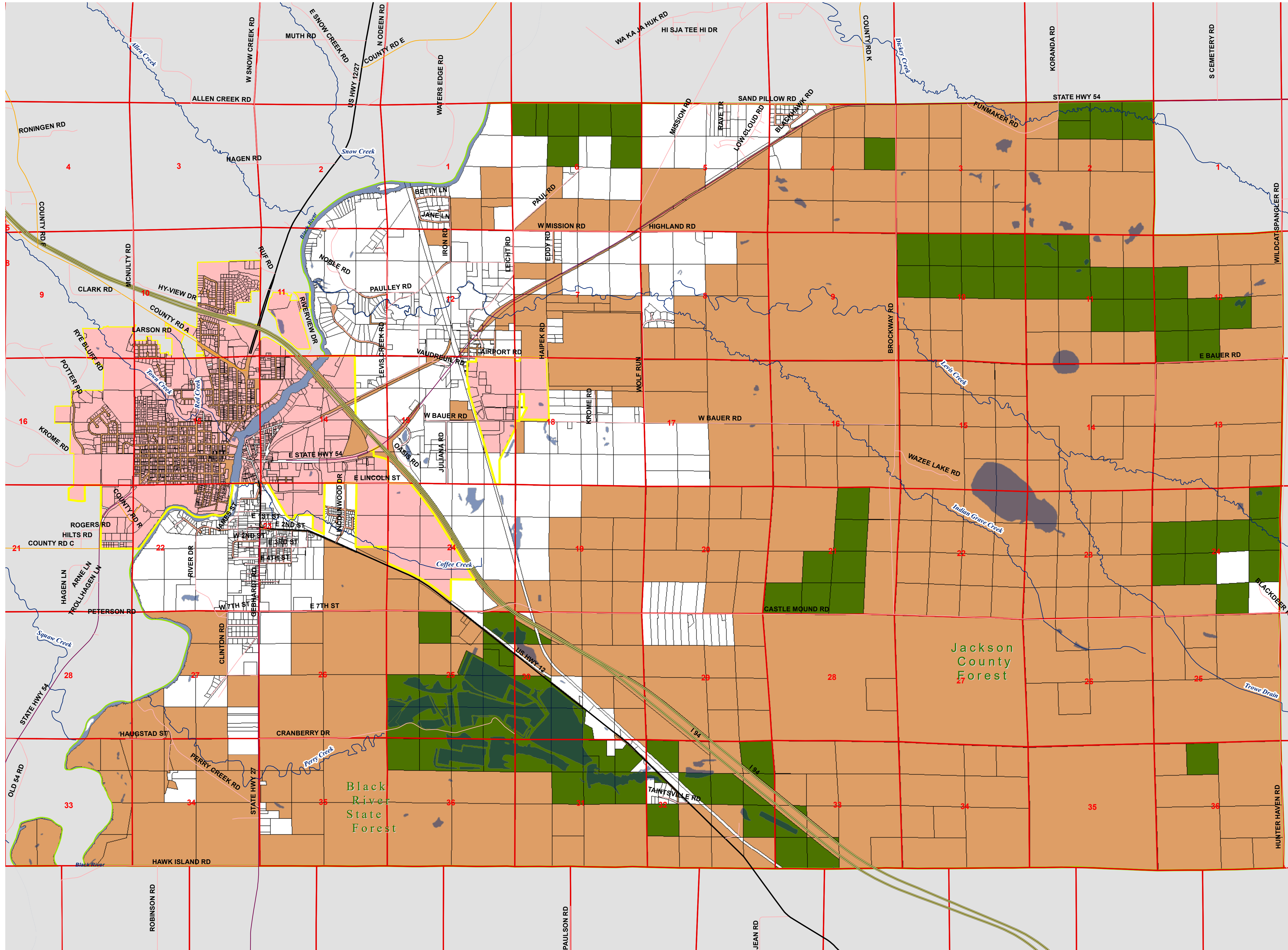


Farmland Preservation Plan Map for Jackson County, Town of Brockway

TOWN of BROCKWAY
T.21N.-R.3W, T.21N-4W



Legend

Roads

- County Road
- Interstate Hwy
- State Hwy
- Town Road
- US Hwy

Hydrology

- Named Streams and Rivers

PLSS Sections

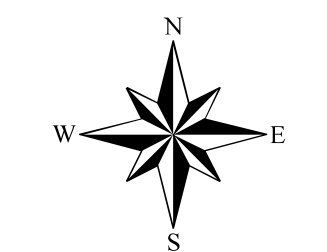
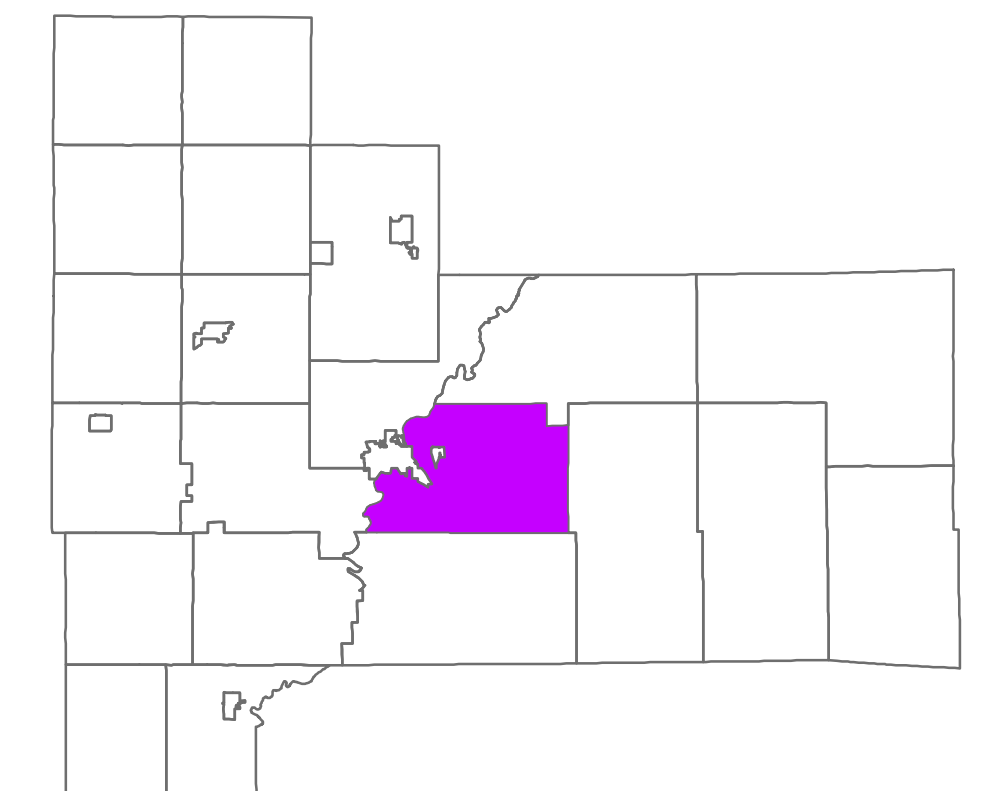
- PLSS Sections

Municipality

- TOWN OF BROCKWAY
- CITY OF BLACK RIVER FALLS
- Open Water

Farmland Preservation Plan Symbol

- Farmland Preservation Area
- Ineligible Parcels
- Government Owned Parcels
- Cities



Map prepared by Al Hoff under the direction of
Jackson County Land Conservation Department
Jackson County Planning and Zoning Department

September, 2016

Where inconsistencies exist between this map and the Future
Land Use Map contained in the Jackson County Comprehensive
Plan, this Farmland Preservation Map shall supersede.

