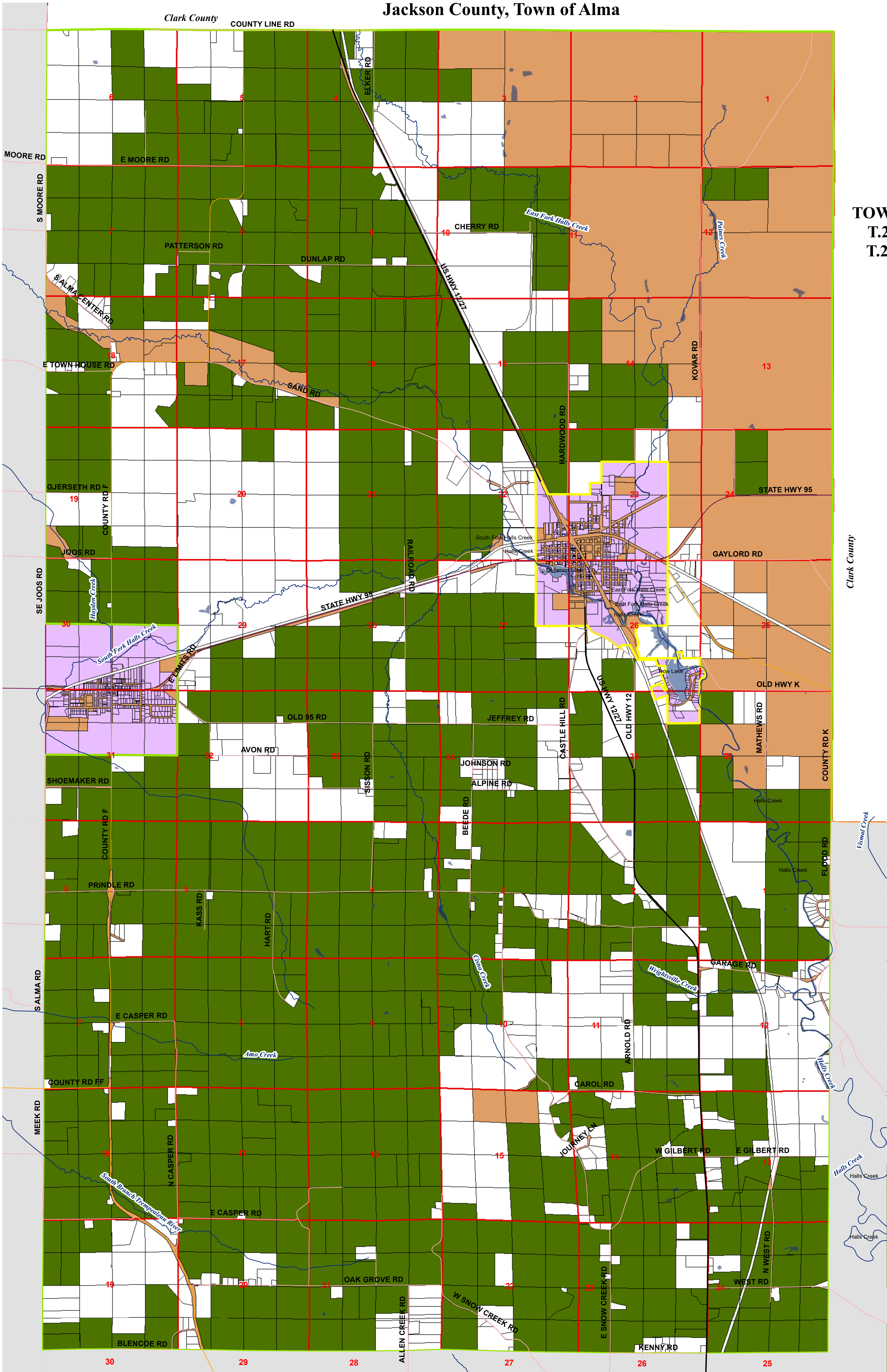


# Farmland Preservation Plan Map for Jackson County, Town of Alma

**TOWN of ALMA**  
**T.23N.-R.4W**  
**T.22N.-R.4W.**



### Legend

#### PLSS Sections

PLSS Sections

#### Roads

County Road  
State Hwy  
Town Road  
US Hwy

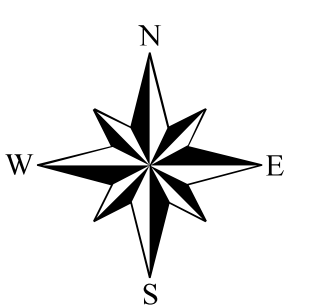
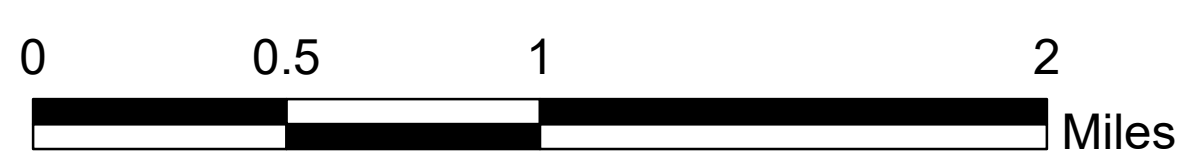
#### Hydrology

Named Streams and Rivers  
Open Water

#### Farmland Preservation Plan Symbol Municipality

Farmland Preservation Area  
Ineligible Parcels  
Government Owned Parcels  
Villages

VILLAGE OF ALMA CENTER  
VILLAGE OF MERRILLEAN  
TOWN OF ALMA



Map prepared by Al Hoff under the direction of  
Jackson County Land Conservation Department  
Jackson County Planning and Zoning Department  
September, 2016

Where inconsistencies exist between this map and the Future  
Land Use Map contained in the Jackson County Comprehensive  
Plan, this Farmland Preservation Map shall supersede.

