

Jackson County Sheriff's Office



2017 Annual Report

**Prepared By:
Sheriff Duane M. Waldera**

I. Introduction

The 2017 annual report is based on information compiled from a variety of resources to include but limited to the internet websites and our internal records management system (RMS). It must be understood that data collected from the Sheriff's Office RMS is as good as the information entered into the system. Employee input and data entry is sometime subject to error for various reasons. However, the data received is very valuable to assist with managing and supervising the daily operations and activities that occur at the Sheriff's Office.

The Jackson County Sheriff's Office is the largest law enforcement agency in Jackson County serving the communities of Black River Falls, Alma Center, Hixton, Melrose, Merrilan and Taylor. There are 20,644 citizens that live in Jackson County, a total area of 1,000 square miles and about 1,700 miles of roadways that would include ATV and snowmobile trails and private driveways.

II. Office of Sheriff - Information

The Office of Sheriff is created by the Wisconsin Constitution (Article VI, Section 4). It is an elected office in each county with a four-year term. Consequently, the Sheriff is a constitutional officer who is the Chief Law Enforcement Officer of the County. The Sheriff's duties are varied and for the most part is defined in the Wisconsin Statutes. These duties include, among other things, maintaining the peace, running the jail, and serving both criminal and civil process.

The Office of Sheriff has certain unique duties, powers, and responsibilities different from other law enforcement agencies. Some of these include (Wis. Stat. § 59.26 - 59.29):

- The Sheriff shall have command of the law enforcement force of the County.
- Take the charge and custody of the jail maintained by the county, including any portion of the jail that is used by the County in a joint government building, and the persons in the jail, and keep the persons in the jail personally or by a deputy or jailer.
- Keep a true and exact register of all prisoners committed to the jail.
- Attend upon the circuit court held in the County during its session.
- The Sheriff, by the Undersheriff or deputies, serve or execute all processes, writs, precepts, and orders issued or made by lawful authority and delivered to the Sheriff.
- To enforce in the County all general orders of the department of safety and professional services relating to the sale, transportation, and storage of explosives.
- Conduct operations within the County and in waters of which the County has jurisdiction for the rescue of human beings and for the recovery of human bodies.

- Enforce all city, or village, ordinances in a city or village, in which the sheriff provides law enforcement services under a contract described under Wis. Stat. § 62.13(2s)(a).
- The Sheriff, Undersheriff, and deputies shall keep and preserve the peace in the County and quiet and suppress all affrays, routs, riots, unlawful assemblies, and insurrections; for which purpose, and for the service of processes in civil or criminal cases and in the apprehending or securing any person for felony or breach of the peace they may call to their aid such persons or power of the County as they consider necessary.
- County law enforcement agencies may request the assistance of law enforcement personnel or may assist other law enforcement agencies as provided by law.
- The Sheriff or other officer who has legally arrested any person in any county may pass across and through such parts of any other county or counties as are in the ordinary route of travel from the place where such person was arrested to the place where the person is to be conveyed, according to the command of the process by which such arrest was made.
- The Sheriff has the power to call a posse comitatus (68 Atty. Gen. 334).
- The Sheriff can, on a case by case basis, assert leadership, control, and direction by reason of his/her superior position as chief law enforcement officer of the County. It is the duty of the local police officers to cooperate. Local law enforcement personnel are subject to the command of the Sheriff even when acting within their municipal boundaries when the Sheriff exercises a call to aid under Wis. Stat. § 59.28(1). The Sheriff has concurrent authority with local law enforcement personnel regardless of municipal boundaries (61 OAG 79).
- Perform all other duties required of the Sheriff by law.

III. Mission Statement

Mission Statement

The mission of the Jackson County Sheriff's Office is to communicate and work with the community to maintain a safe environment, prevent crime and enforce the law, while protecting the rights of all.

Values

As members of the Jackson County Sheriff's Office we proudly commit to the following values that will be used to guide our daily thoughts and actions:

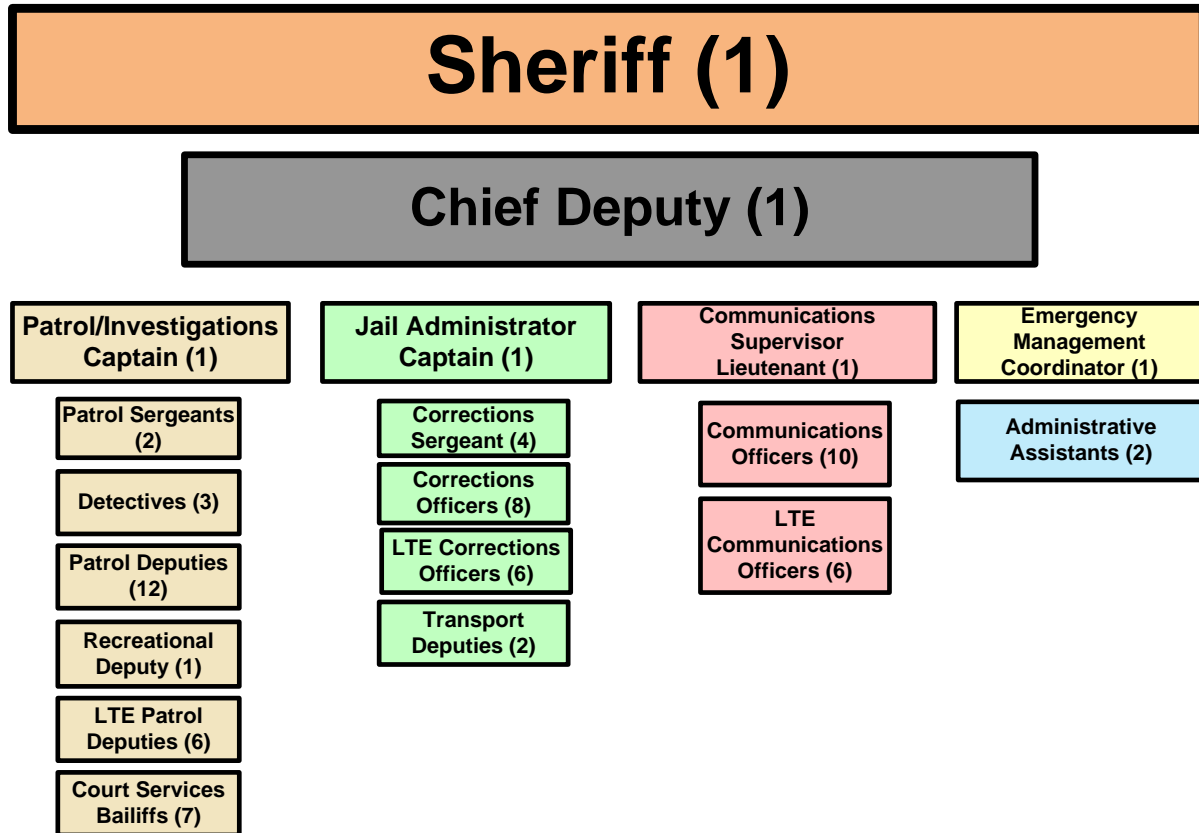
Integrity	Dedication
Excellence	Courage
Compassion	Impartiality

Vision

To be a highly respected, well educated, professional law enforcement agency committed to leadership, unity and excellence.

IV. Organization Structure

The Sheriff's Office employees 46 full time (FTE) employees and about 27 limited term employees (LTE). The chart below shows the organizational structure at the Sheriff's Office.



V. Budget Comparison Information

Line Item - Expenditures	2016	2017	Inc. vs. Dec.
Recreational Law Enforcement	66,521.37	59,436.35	6,609.04
Tribal Law Enforcement	58,916.59	66,240.16	7,323.57
Sheriff (Personnel Expense)	1,678,333.84	1,732,106.50	53,772.66
Traffic (Operational Expense)	355,151.11	407,686.08	52,534.97
Communications Division	753,757.79	706,913.89	-46,843.9
Teletype Expense	9,846.00	9,846.00	0.0
Canine Program Expense	1,485.72	2,000.00	514.28

Electronic Monitoring	33,029.31	38,403.59	5,374.28
Mutual Aid – Other	20,991.34	9,703.76	-11,287.58
EM Govt. - EMPG	45,166.85	132,819.18	87,652.33
EM Govt. - EPCRA	39,028.94	0.00	-39,028.94
Bailiff - Law Enforcement	44,725.76	66,482.85	21,757.09
Jail	1,235,880.90	1,294,029.21	58,148.31
Emergency Medical – Jail	168,352.56	152,486.46	-15,866.1
Total	4,513,204.08	4,693,865.09	180,661.01

Offsetting Revenues	2016	2017	Inc. vs. Dec.
Inter-Govt. Revenue	146,385.99	150,213.34	3,827.35
Fines, Forf. & Penal. (Parking)	140.00	30.00	-110
Public Charges - Service	295,038.98	325,405.18	30,366.2
Misc. Revenue	44,710.00	50,880.00	6,170
Total	488,290.97	528,545.52	40,254.55

	2016	2017
Expenditures	4,513,204.08	4,693,865.09
Revenues	488,290.97	528,545.52
Total Levy	4,024,913.11	4,165,319.57

In 2016 the Sheriff's Office personnel expenses accounted for about 74% of the budget, operational expenditures were about 21% of the budget and capital purchases or outlay was about 5% of the budget. The offsetting revenues received for 2016 decreased the need for levy dollars by about 10.8% or \$488,290.97.

In 2017 the Sheriff's Office personnel expenses accounted for about 77% of the budget, operational expenditures were about 19% of the budget and capital purchases or outlay was about 4% of the budget. The offsetting revenues received for 2017 decreased the need for levy dollars by about 11.2% or \$528,545.52.

VI. Administrative Support

Administrative support has two (2) Law Enforcement Confidential Secretaries assigned to the division. Administrative Support is responsible for data entry, records management, maintaining and distribution of case reports, civil process, records requests, Sheriff sales, and other duties and responsibilities as assigned.

The following categories are some of the area that is monitored throughout the year.

Categories	2016	2017
Civil Process	1320	1082
Sheriff Sales	15	17
Records Requests		250

VII. Telecommunications Division

The Telecommunications Division (dispatch) is technically where everything starts. The dispatch center is the designated PSAP (Primary Safety Answering Point) for Jackson County. All emergency 911 and non-emergency calls for services are received at the dispatch center. The dispatchers are also responsible for all radio related traffic and recording of calls that occur in Jackson County. In summary, the dispatchers receive all the information and then forward the information to the respective persons, departments and agencies in Jackson County and the State of Wisconsin. The dispatchers assign the majority of the case numbers related to reported incidents that occur in Jackson County. The dispatchers are also responsible for entering all warrants and injunctions that are processed in Jackson County.

Categories	2016	2017
Total CAD Calls Recorded	29360	27080
Total Law Incidents Recorded	12461	10576
<ul style="list-style-type: none"> • Jackson County Sheriff's Office • Black River Falls Police Department • Merrilan Police Department • Ho Chunk Police Department • Melrose Police Department • Dept. of Natural Resources (DNR) • Wisconsin State Patrol • Other 	<ul style="list-style-type: none"> • 7866 • 2176 • 239 • 112 • 102 • 43 • 12 • 26 	<ul style="list-style-type: none"> • 8756 • 2993 • 317 • 248 • 86 • 39 • 3 • 20
Total 911 Calls	2202	2412
Warrant / Injunctions	1261	945

It should be noted that the Total Incidents Recorded indicates that number of calls that were entered into our records management software. This does not reflect the actual number of phone calls that the dispatch center received in one year. At this time, we do not have capability to record how many phone calls are actually received in one year, but it is much higher than the numbers indicated above.

VIII. Patrol Division

The command structure that supervises and manages the patrol division one (1) Patrol/Investigations Captain and two (2) patrol sergeants. The patrol division consists of twelve (12) full time certified deputies. The deputies work six (6) days on duty followed by three (3) days off. The deputies work 1950 hours per year; cover 24 hours a day, 365 days a year.

Limited Term Employees (LTE) also considered part time deputies support the patrol division when needed. LTE deputies are assigned to work law enforcement contract services, forestry and parks, patrol sector assignments, and several other duties as

needed. The Sheriff's has between six (6) to eight (8) available LTE. The number of LTE deputies employed at the Sheriff's Office are based on the need for their support services and availability.

The Sheriff's Office is contracted to provide law enforcement services for three municipalities: Village of Taylor, Village of Hixton, and Town of Millston.

The Sheriff's Office records management system shows the following breakdown for the years 2016 and 2017.

The Patrol Division is responsible for handling the majority of the initial calls and complaints that are received by dispatch. Patrol Deputies also have additional responsibilities to include, but not limited to serving civil process, premise checks, case follow-ups and traffic enforcement.

2016 and 2017 statistics:

Traffic Information	2016	2017
Traffic Stops Made	4545	2757
Total Citations Issued (All)	1505	1399
Written Warnings Issued	1894	1249
All Traffic Accidents	660	645
• Fatality	• 2	• 3
• Incapacitating	• 17	• 14
• Minor Injury	• 28	• 56
• Non-Incapacitating	• 35	• 0
• Property Damage	• 245	• 216
• Deer/animals	• 319	• 354
• Other	• 14	• 2
Operating While Under the Influence Arrests	134	161
• Jackson County Sheriff's Office	• 95	• 109
• Wisconsin State Patrol	• 28	• 46
• Black River Falls Police	• 5	• 5
• Ho Chunk Nation Police	• 2	• 0
• DNR	• 2	• 1
• Melrose Police	• 1	• 0
• Merrillan Police	• 1	• 0

Type of calls handled	2016	2017
Alarms	303	284
Agency assist	256	285
Animal Problems	673	591
Attempt to Locate	289	301
Bail jumping	82	91
Battery/Assault	55	47

Burglary	73	79
Mental Health / Chapter 51	185	163
Damage to Property	131	160
Child abuse / Neglect	49	58
Citizen assist / civil	165	206
Controlled Substance / Drugs	218	225
Death Investigations	40	40
Disorderly Conduct / Disturbance	249	284
Domestic related	109	109
Fraud / Forgery	216	154
Homicide – (Drug related)	0	1
Negligent Homicide	0	1
Juvenile problem / matter	162	213
Obstructing / Resisting	32	47
Robbery	3	0
Sexual assault / Sex Offense	46	47
Suspicious activity	1038	1015
Threatening	93	98
Trespassing	142	111
Theft Property (all)	101	104
Theft Vehicle (all)	28	19
Utility Problem	79	99
Warrant pick up	184	234
Welfare Check	382	390

IX. Detective Division

The Jackson County Sheriff's Office investigates all child related sexual assaults and neglect cases that occur in Jackson County, to include the City of Black River Falls. The detective division investigated the majority of these cases and the remainder of the cases was assigned to a patrol deputy when assistance was needed. Many of these cases are generated and started as referrals from the Jackson County Department of Health and Human Services.

2016	Matt Koran	Nick Gray	Janelle Smokowicz
Active / Open Cases	4	7	1
Inactive with No Leads	1	0	0
Cases Closed	39	43	1
Cases Cleared by arrest / Referral	8	5	0
No Report Taken (NRT)	3	14	0
Total Cases Assigned	55	69	2

2017	Matt Koran	Nick Gray	Janelle Smokowicz
Active / Open Cases	6	5	1
Inactive with No Leads	0	0	2
Cases Closed	37	43	12
Cases Cleared by arrest / Referral	4	5	0
No Report Taken (NRT)	8	9	1
Total Cases Assigned	55	62	16

Case assigned by Nature of the incident

2016	Matt Koran	Nick Gray	Janelle Smokowicz
Child Abuse / Neglect	4	5	0
Sex Offense	7	16	0
Death Investigations	2	6	0
Agency Assist	9	7	0
Drug Investigations	7	7	0
Theft / Fraud	7	0	0
Other	19	28	2
Total	55	69	2

2017	Matt Koran	Nick Gray	Janelle Smokowicz
Child Abuse / Neglect	10	7	1
Sex Offense	6	5	0
Death Investigations	1	3	0
Agency Assist	8	3	0
Drug Investigations	5	11	0
Theft / Fraud	4	4	11
Other	21	29	4
Total	55	62	16

X. Corrections Division

The Corrections Division is supervised and managed by the Jail Administrator who has the rank of Captain. 2016 and 2017 the jail command structure was Captain, Sergeant and four (4) Corporals. Eight (8) Corrections officers and four (4) LTE – part time Corrections Officers were assigned to maintain the safety and security of the jail 24/7, 365 days a year.

2016 and 2017 Corrections / Jail statistics:

Categories	2016	2017
Total bookings / arrests	• 1384	• 1424
Average Daily Population		
• All inmates	• 73	• 78
• Inside jail – Cell blocks	• 52	• 53
• Outside jail (EMP)	• 21	• 25
Demographic Analysis (JASO)		
• Total	• 652	• 967
• Female	• 188	• 279
• Male	• 464	• 688
Inmate Race		
• Asian	• 0	• 6
• Indian/Alaska Native, Hispanic	• 8	• 9
• White/Latin, Hispanic	• 23	• 23
• Black, Non-Hispanic	• 24	• 58
• Indian/Alaska Native, Non-Hispanic	• 171	• 266
• White, Non-Hispanic	• 424	• 593
• No Code entered/unknown	• 2	• 9
Inmate Crime – Classification		
• Civil Forfeiture	• 2	• 1
• Felony	• 90	• 88
• Local Ordinance	• 8	• 9
• Misdemeanor	• 202	• 227
• Non-Criminal	• 0	• 1
• Traffic	• 153	• 213
• No Code Entered	• 197	• 428
Inmate Judicial Status		
• Holds for other Jurisdictions	• 12	• 24
• Pre-Sentence	• 262	• 324
• Probation Holds	• 112	• 134
• Sentenced	• 91	• 176
• No Code Entered	• 175	• 309

XI. Conclusion

The activities and calls for service in Jackson County continues to remain very consistent from year to year. The Sheriff’s Office will continue to take a proactive approach to law enforcement so the citizens of Jackson County know that we are not just reacting to the problems, but finding solutions to the issues that are occurring. Law enforcement presence in the public is very important. Patrol deputies need to stay on the road attempting to deter criminal behavior and hopefully gain the trust and respect from our citizens and visitors. I will continue to utilize the Sheriff’s Office personnel and equipment as efficiently and effectively as possibly. We have already made significant

changes within the Sheriff's Office and will continue to make the necessary improvements that are needed.

I would like to thank and give credit to all of the Jackson County Sheriff's Office supervisors and employees for assisting with preparing this information for the annual report. It is their hard work and dedication to Jackson County that should be recognized.

In closing, I will continue to work hard and provide the citizens of Jackson County professional, competent law enforcement services. I would like to thank all of the Jackson County Board of Supervisors for their time and understanding, as well as their help along the way.

Sincerely,

Duane M. Waldera
Jackson County Sheriff